

TorvigressTM

Torsemide 20 mg / 40 mg / 100 mg Tablets

Indication:

Torvigress is indicated to reduce extra fluid in the body (edema) associated with Renal disease Congestive heart failure, or Hepatic disease.

Use of Torvigress has been found to be effective for the treatment of edema associated with chronic renal failure.

Torvigress is indicated for the treatment of hypertension alone or in combination with other antihypertensive agents.

Mode of Action:

Torsemide acts from within the lumen of the thick ascending portion of the loop of Henle, where it inhibits the Na⁺/K⁺/2Cl⁻ carrier system.

Clinical pharmacology studies have confirmed this site of action in humans.

Diuretic activity thus correlates better with the rate of drug excretion in the urine than with the concentration in the blood.

Torsemide increases the urinary excretion of sodium, chloride, and water, but it does not significantly alter glomerular filtration rate, renal plasma flow, or acid-base balance.

Dosage:

● Congestive Heart Failure

20 mg once daily initially; doubled until desired diuretic effect is achieved; individual dose not to exceed 200 mg

● Chronic Renal Failure

20 mg once daily initially; doubled until desired diuretic effect is achieved; individual dose not to exceed 200 mg

● Hepatic Cirrhosis

5-10 mg once daily initially with aldosterone antagonist or potassium-sparing diuretic; individual dose not to exceed 40 mg

● Hypertension

Starting dose of 5mg and thereby as directed by the physician

Presentation:

Torvigress is available as a strip of 10 tablets

Storage:

Store in cool and dry place.

La Renon Healthcare

207-208 Iscon Elegance | Circle P | Prahlad Nagar Cross Roads | S.G. Highway | Ahmedabad-380015 | Gujarat, India.
Phone: + 91-79-3046-1000 (30 lines) | Fax: +91-79-3046-1001 | E-mail: info@larenon.com | Web: www.larenon.com

I am: _____

Mail me @ : _____

Call me on : _____



**SUBDUE
THE SURPLUS...**

...with

TorvigressTM

Torsemide 20 mg / 40 mg / 100 mg Tablets

TorvigressTM

Torsemide 20 mg / 40 mg / 100 mg Tablets

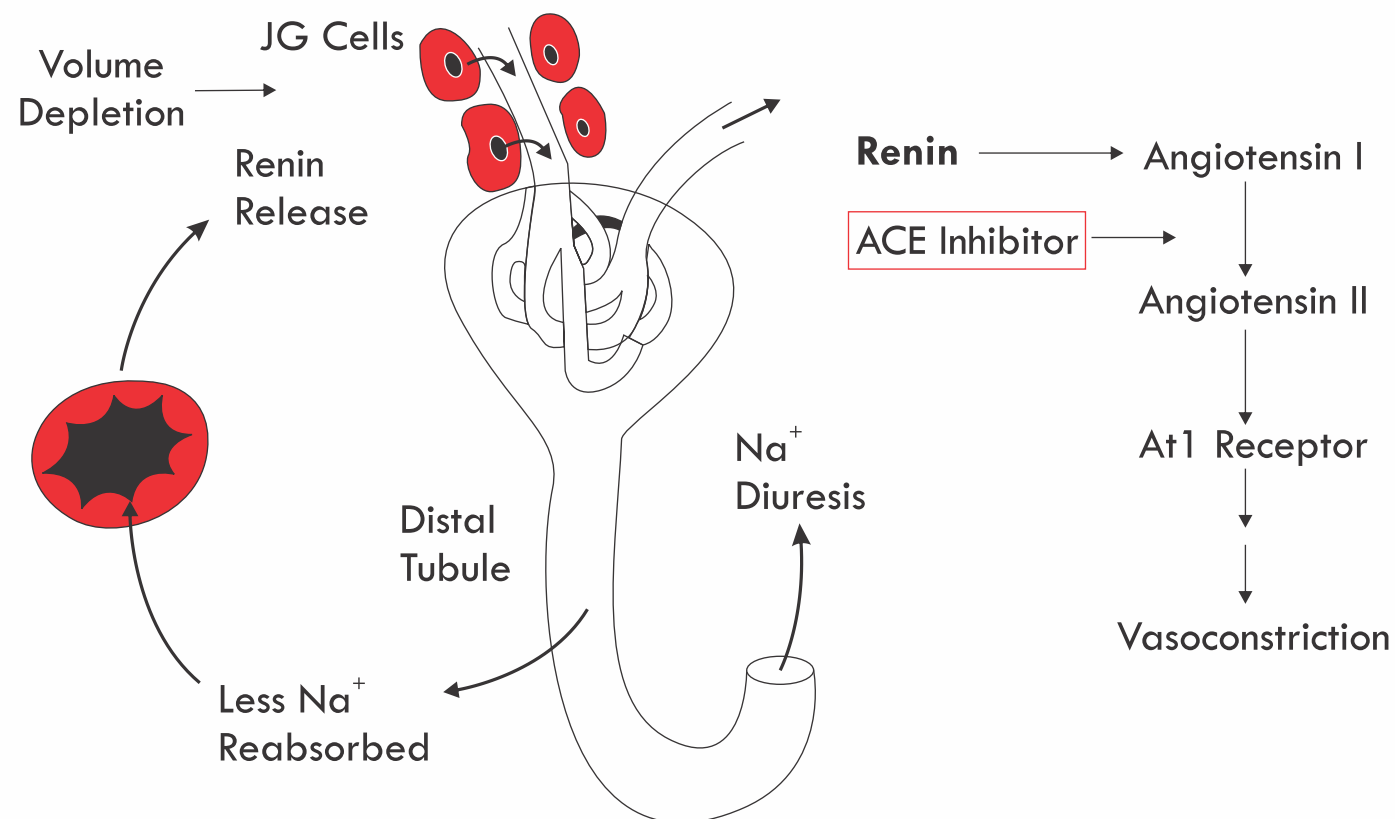
Introduction:

- Torvigress (Torsemide) is a diuretic of the pyridine-sulfonylurea class.
- Torsemide belongs to the group of medicines called loop diuretics.
- Torsemide is given to help reduce the amount of water in the body in certain conditions, such as congestive heart failure, severe liver disease (cirrhosis), or kidney disease.
- It works by acting on the kidneys to increase the flow of urine. .
- Torsemide is also used to treat high blood pressure.

Mechanism of Action:

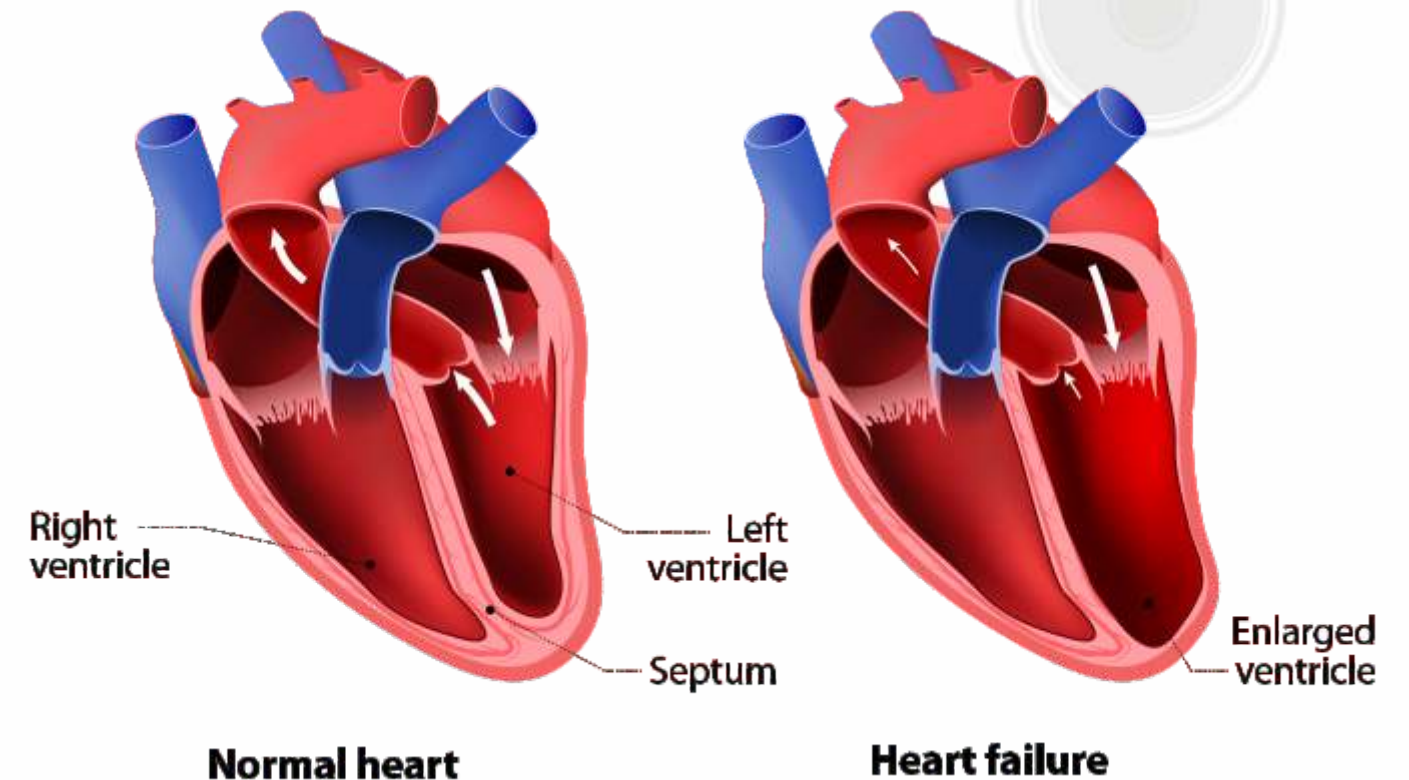
- It works by making the kidney eliminate larger amounts of electrolytes (especially sodium, chloride and potassium) and water than normal (diuretic effect).
- But it does not significantly alter glomerular filtration rate, renal plasma flow, or acid-base balance.
- Diuretic activity thus correlates better with the rate of drug excretion in the urine than with the concentration in the blood.

Diuretic Effects



Congestive Heart Failure

A chronic condition in which the heart doesn't pump blood as well as it should.



- A double-blind, randomized, multicenter study compared treatment with Torsemide 10 mg, Torsemide 20 mg, and Furosemide 40 mg, once daily, in 70 patients with congestive heart failure was performed.
- All three treatment groups showed statistically significant decreases in body weight, ranging from 1 to 3 kg at week 6.
- The decrease in body weight were significantly greater in the 20-mg torsemide group than other groups.
- Torsemide 20 mg group showed a statistically significant reduction in edema.
- Both the 10-mg and 20-mg torsemide groups showed statistically significant improvement in heart size.
- In the end, Torsemide 20 mg was more effective than other drug in reducing body weight and improving symptoms of congestive heart failure.