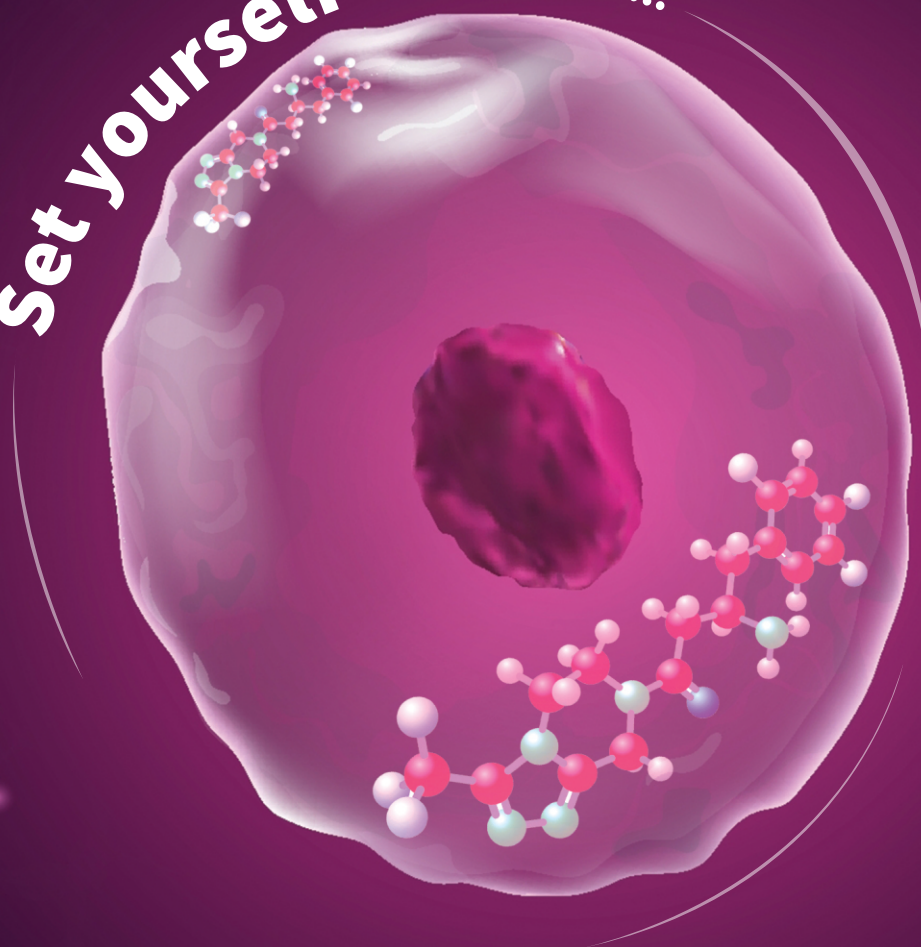


Set yourself free with...



Sitahenz-50/100

Sitagliptin 50 mg and 100 mg Tablets

Sitahenz-M 500/1000

Sitagliptin 50 mg and Metformin (Sustained Release) 500 mg/1000 mg Tablets

Sitahenz-M OD

Sitagliptin 100 mg and Metformin (Sustained Release) 1000 mg Tablets

Sitahenz-MQ 500/1000

Sitagliptin 50 mg and Metformin (Quick Release) 500 mg/1000 mg Tablets

Sitahenz-50/100

Sitagliptin 50 mg and 100 mg Tablets

Sitahenz-M OD

Sitagliptin 100 mg and Metformin (Sustained Release) 1000 mg Tablets

Sitahenz-M 500/1000

Sitagliptin 50 mg and Metformin (Sustained Release) 500 mg/1000 mg Tablets

Sitahenz-MQ 500/1000

Sitagliptin 50 mg and Metformin (Quick Release) 500 mg/1000 mg Tablets

DESCRIPTION:

- € **SITAHENZ** Tablet is available in two strengths i.e. Sitagliptin 50 mg & 100 mg
- € **SITAHENZ-M 500,1000** is a film coated Bilayered tablet contains Sitagliptin (50 mg) and Metformin (as sustained release) 500 mg/1000 mg.
- € **SITAHENZ-M OD** is a film coated Bilayered tablet contains Sitagliptin 100 mg and Metformin (Sustained Release) 1000 mg.
- € **SITAHENZ-MQ 500,1000** contains Sitagliptin 50 mg and Metformin (Quick Release) 500 mg/1000 mg Tablet.

INDICATION:

- € **SITAHENZ**: Is a dipeptidyl peptidase-4 (DPP-4) inhibitor indicated as an adjunct to diet and exercise to improve glycemic control in adults with type 2 diabetes mellitus.
- € **SITAHENZ-M/MQ/M OD**: Indicated as an adjunct to diet and exercise to improve glycemic control in adults with type 2 diabetes mellitus when treatment with both sitagliptin and metformin is appropriate.

MECHANISM OF ACTION:

- € **Sitagliptin** selectively inhibits the action of DPP-4, the primary enzyme degrading the incretin hormones, allowing glucagon-like peptide-1 and glucose-dependent insulinotropic peptide to facilitate glucose regulation in response to a meal.
- € **Metformin** decreases blood glucose levels by decreasing hepatic glucose production (also called gluconeogenesis), decreasing the intestinal absorption of glucose, and increasing insulin sensitivity by increasing peripheral glucose uptake and utilization.

Dosage & Administration:

SITAHENZ: The recommended dose of SITAHENZ is 100 mg once daily or as prescribed by the doctor.

Dose adjustment is needed for moderate to severe renal impairment:

- € eGFR 30-45 ml/min 50 mg once daily
- € eGFR < 30 ml/min including end stage renal disease on dialysis 25 mg once daily.

SITAHENZ-M/MQ: The recommended total daily starting dose of SITAHENZ-M/MQ is 100 mg sitagliptin and 1000 mg metformin or as prescribed by the Physician.

- € For patients already being treated with metformin 500 mg twice daily, start with: 50/500 mg; 1 tablet, twice daily
- € For patients already being treated with metformin 850 mg or 1000 mg twice daily, start with: 50/1000 mg; 1 tablet, twice daily

SITAHENZ-M OD: The recommended total daily starting dose of SITAHENZ-M OD is 100 mg sitagliptin and 1000 mg metformin or as prescribed by the Physician.

PRESENTATION:

- € **SITAHENZ/SITAHENZ-M/ SITAHENZ-M OD** is available as 10 tablets in a strip.
- € **SITAHENZ-MQ** is available as 15 tablets in a strip.

References:
Drugs Today (Barc). 2007 Jan;43(1):13-25.
Vasc Health Risk Manag. 2008;4(2):383-94.

La Renon Healthcare Private Limited

207-208 Iscon Elegance, Circle P, Prahlad Nagar Cross Roads,
S.G. Highway, Ahmedabad-380015, Gujarat, India.
Phone: + 91-79-6616-8998, 2693-6656 | Fax: +91-79-6616-8998
E-mail: info@larenon.com | Web: www.larenon.com

I am: _____
Call me on: _____
Mail me at: _____

©2022 All rights reserved, La Renon Healthcare Private Limited