

ITORIHENZ-150

Itopride Hydrochloride 150 mg SR Capsules

CEASE THE *Reflux*



ITORIHENZ-150

Itopride Hydrochloride 150 mg SR Capsules

BACKGROUND:

Gastroesophageal reflux disease (GERD) and Functional Dyspepsia (FD) are the most prevalent gastrointestinal disorders. The prevalence of functional dyspepsia in India is 30.4% and GERD is 7.6-30%.¹

Itopride is a gastroprokinetic agent, primarily used in the treatment of the disorders associated with reduced gastrointestinal motility. Besides this, ITOPRIDE HYDROCHLORIDE also treats gastrointestinal disorders.

CLINICAL EVIDENCE:

1. Itopride in the Treatment of Functional Dyspepsia in Chinese Patients.

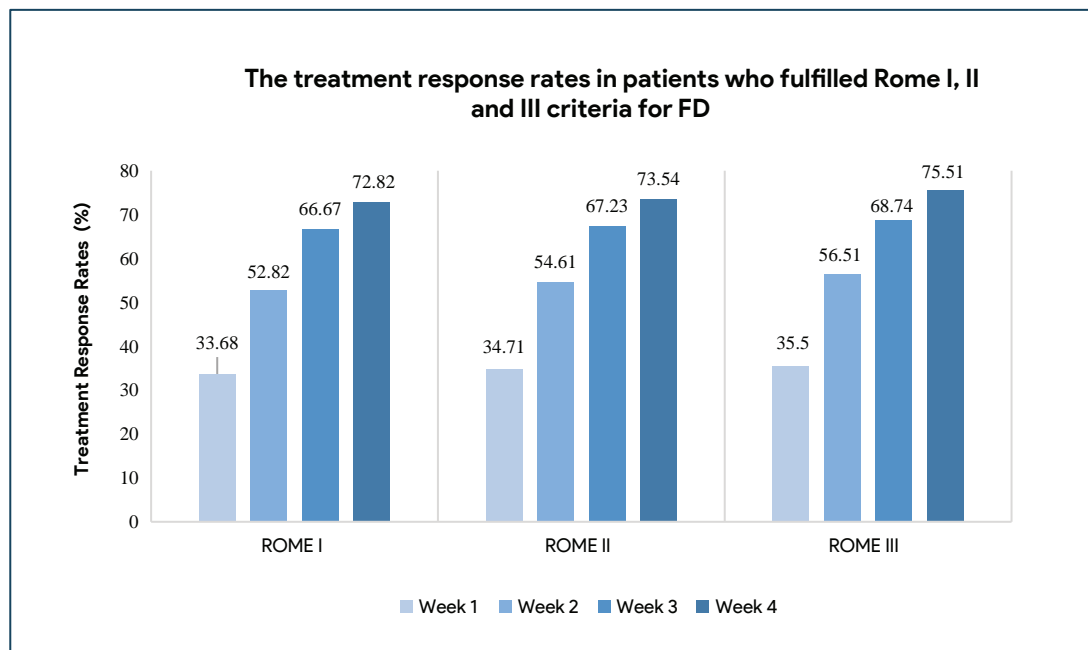
JAPI - Vol. 52, Aug. 2004

No. of Patients: 587(Patients>18 years of age)

Duration: 4 weeks

Dose: 50mg Thrice daily before meals

Result:



Conclusion: Itopride was an effective and well-tolerated drug in the management of FD in this patient population.

2. Efficacy and Tolerability of Itopride Hydrochloride and Domperidone in Patients with Non-Ulcer Dyspepsia.

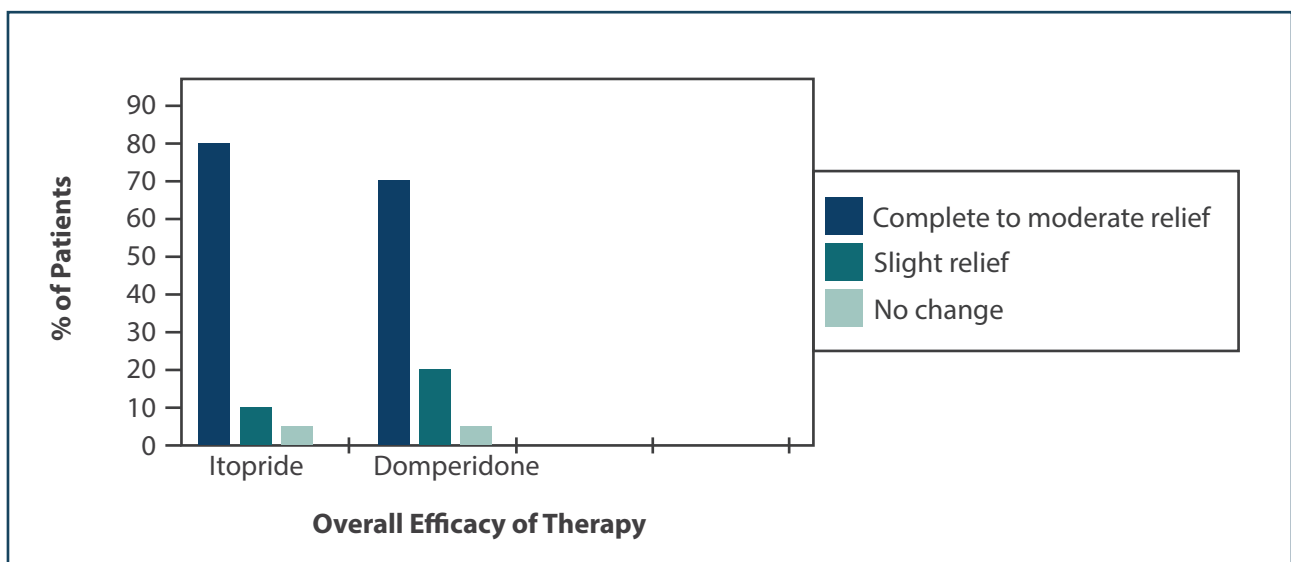
Clinical drug investigation 2011

No. of Patients: 55 Patients (Itopride=27 Patients, Domperidone= 28 Patients)

Duration: 2 weeks

Dose: Itopride hydrochloride 50 mg thrice daily or one tablet of domperidone 10 mg thrice daily, 15-30 minutes before meals.

Result: Comparative overall efficacy of itopride and domperidone in patients with non-ulcer dyspepsia



Conclusion: Therapy with itopride resulted in good symptomatic relief, was safe, well tolerated and comparable in efficacy to domperidone in relieving the symptoms of NUD.

KEY FEATURES:

- Approximately 50 percent greater improvement in symptom score than placebo.²
- Good efficacy in terms of global patient's assessment, post prandial fullness early satiety in the treatment of patient with FD.³
- Itopride inhibits transient LES relaxations (TLESRs) without significantly affecting esophageal peristaltic function or LES pressure.²

ITORIHENZ-150

Itopride Hydrochloride 150 mg SR Capsules

DESCRIPTION:

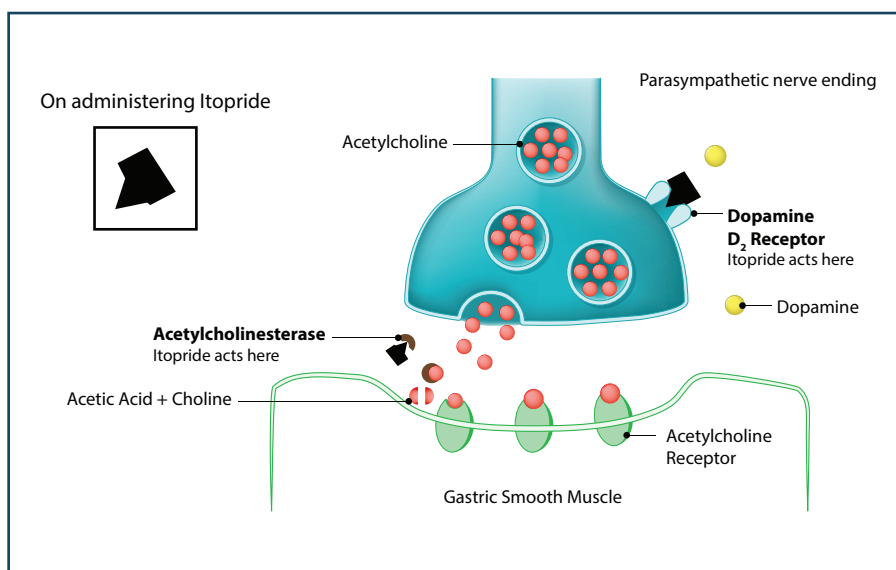
ITORIHENZ-150 contains itopride hydrochloride 150 mg & available as a sustained release hard gelatin capsules.

INDICATIONS:

In the treatment of patients suffering from Non-Ulcer Dyspepsia (NUD), Gastroesophageal Reflux Disease (GERD) and Functional Dyspepsia (FD)

MECHANISM OF ACTION:

Itopride hydrochloride is a prokinetic agent. It has anticholinesterase (AChE) activity as well as dopamine D₂ receptor antagonistic activity.



DOSAGE AND ADMINISTRATION:

The Recommended dose of ITORIHENZ-150 is 1 capsule once daily or as directed by the physician. Capsule should be swallowed whole 1 hour before meal with some water.

STORAGE:

Store protected from light and moisture at a temperature not exceeding 25°C.

PRESENTATION:

ITORIHENZ-150 is available as a strip of 10 capsules.

References:

- 1.SUPPLEMENT TO JAPI, VOL. 60
- 2.ALIMENTARY PHARMACOLOGY & THERAPEUTICS, WILEY, 2010
- 3.N ENGL J MED:354:832(40):2006