

La Renon



*Calm the Storm*

**PRAXOHENZ CR**

Paroxetine 12.5 mg and 25 mg Controlled Release Tablets

---

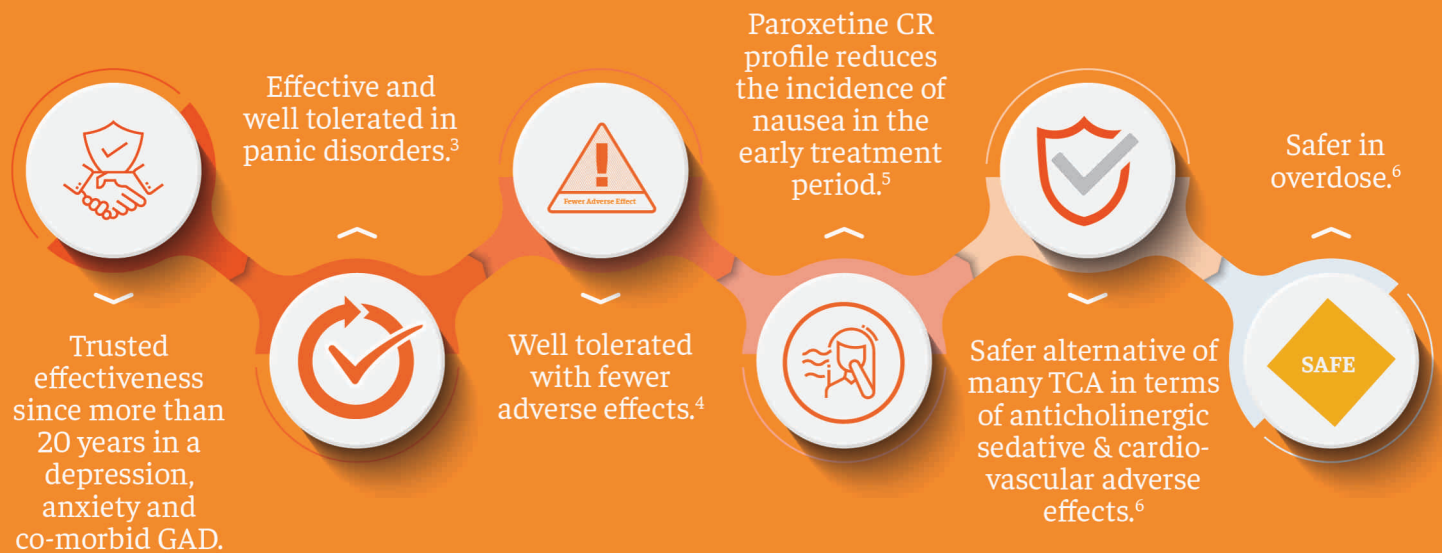
**PRAXOHENZ-CZ**

Paroxetine 12.5 mg Controlled Release  
and Clonazepam 0.5 mg Tablets

## Introduction:

- Major depression is a common illness that severely limits psychosocial functioning and diminishes quality of life.<sup>1</sup>
- In 2008, WHO ranked major depression as the third cause of burden of disease worldwide and projected that the disease will rank first by 2030.<sup>1</sup>
- Patients with depression often have features of anxiety disorders and vice versa.<sup>2</sup>

## Key Points:



REFERENCES : 1.LANCET. 2018 Nov 24;392(10161):2299-2312. | 2.MED J AUST 2013; 199 (6): S28-S31. | 3.FRONT PHARMACOL. 2020 MAR 31;11:275.  
4.J PSYCHOPHARMACOL. 1987 JAN;1(4):251-7. | 5.PSYCHIATRY AND CLINICAL NEUROSCIENCES 2011; 65: 655-663 | 6.HUM PSYCHOPHARMACOL CLIN EXP 2003; 18: 185-190.

## Clinical Effectiveness :

*Psychiatry Clin Neurosci. 2011 Dec;65(7):655-63.*

### 1) Paroxetine controlled-release formulation in the treatment of major depressive disorder: A randomized, double-blind, placebo-controlled study in Japan and Korea

**No. of patients :** 416 Patients

**Duration :** 8 weeks

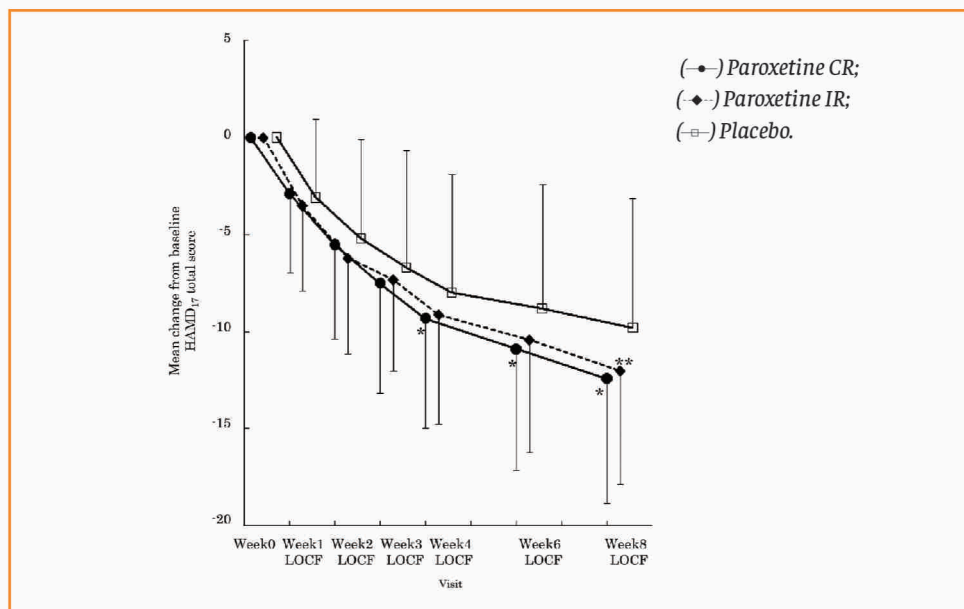
**Dose:**

Eligible patients were randomized in a ratio of 2:1:2 to paroxetine CR, paroxetine immediate-release (IR) and placebo.

Week 0: Paroxetine (CR-L) 12.5 mg, Paroxetine(IR-L) 10 mg, Paroxetine (CR-H) 25 mg, Paroxetine (IR-H) 20 mg

Week 1: Paroxetine (CR-L) 25 mg, Paroxetine(IR-L) 20 mg, Paroxetine (CR-H) 25 mg, Paroxetine (IR-H) 20 mg

After week 1: Paroxetine CR was 25–50 mg/day, and for Paroxetine IR 20–40 mg/day.



**Conclusion:** Paroxetine CR is efficacious in the acute treatment of MDD and have the potential benefit of decreasing the incidence of nausea in the early treatment period.

*Journal of Psychopharmacology*, 2003 Sep;17(3):276-82

## 2) Combined paroxetine and clonazepam treatment strategies compared to paroxetine monotherapy for panic disorder

**No. of patients:** 60 Patients

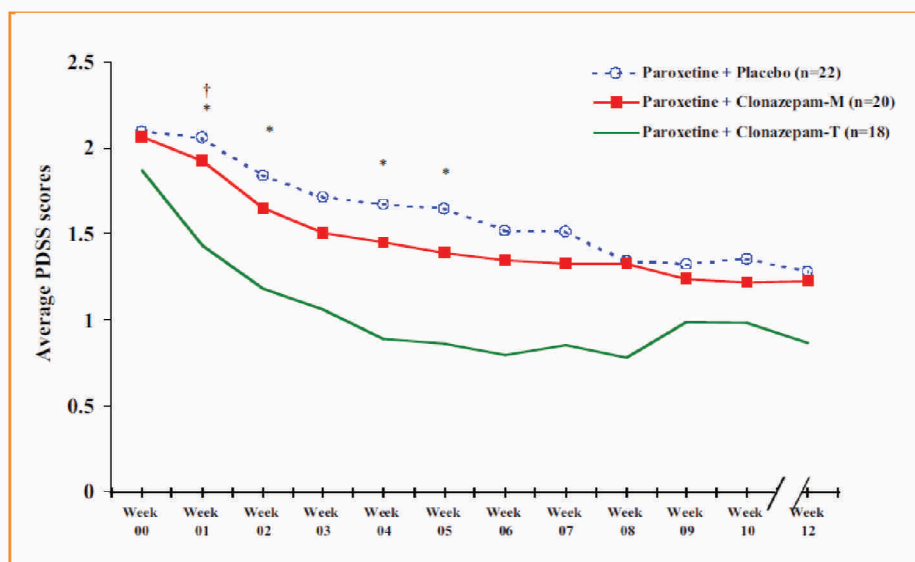
**Duration:** 12 Weeks

**Dose:**

1) Initial 4 weeks of treatment to a maximum of 2.0 mg/day of clonazepam, stabilized for 1 week and then tapered off by 0.5 mg/day for 3 weeks.

2) The dose of paroxetine in the three groups were 38.6 mg/day (PC-Maintained), 37.0 mg/day (PC-Tapered) and 39.0 mg/day (Paroxetine with placebo)

**Results:**



**Conclusion:** Combined treatment with paroxetine and clonazepam resulted in more rapid response than with the SSRI alone.



# PRAXOHENZ CR

Paroxetine 12.5 mg and 25 mg Controlled Release Tablets

# PRAXOHENZ-CZ

Paroxetine 12.5 mg Controlled Release and Clonazepam 0.5 mg Tablets

## Description:

**Praxohenz CR** contains Paroxetine in the strengths of 12.5 mg and 25 mg available as controlled release tablets. **PRAXOHENZ-CZ** contains Paroxetine (controlled release) with Clonazepam in the strength of 12.5 mg + 0.5 mg tablets

## Mechanism of action :

**Paroxetine** is a selective serotonin reuptake inhibitor, which block the presynaptic active membrane transport mechanism for the reuptake of serotonin and consequently increases serotonergic activity at the postsynaptic receptor. Thus it effectively increases the concentration of endogenous serotonin in the synaptic cleft.<sup>1</sup>

**Clonazepam** is a benzodiazepine (BZD) which increases the action of inhibitory neurotransmitter, GABA, a chemical messenger that suppresses the abnormal activity of the nerve cells in the brain produce a calming effect in persons with anxiety and depression.

## Indication:

**PRAXOHENZ CR** is indicated for symptomatic relief of Major Depressive Disorder, Panic Disorder, Generalized Anxiety Disorder, Social Anxiety Disorder, Obsessive Compulsive Disorder, Posttraumatic Stress Disorder, Premenstrual Dysphoric Disorder.<sup>1</sup>

**PRAXOHENZ-CZ** is indicated for the treatment of patients with co-morbid depression and anxiety.

## Dosage:

### Praxohenz CR -

- ☞ **Depression:** The recommended initial dose is 25 mg/day, maximum dose is 62.5 mg/day.
- ☞ **Panic Disorder:** Patients should be started on 12.5 mg/day, maximum dose is 75 mg/day.
- ☞ **Social Phobia (Social Anxiety Disorder):** The recommended initial dose is 12.5 mg/day, maximum dose is 37.5 mg/day.
- ☞ **Premenstrual Dysphoric Disorder:** The recommended dose is 12.5 mg/day which increase to 25 mg/day.

### Praxohenz - CZ -

- ☞ As directed by the Registered Medical Practitioner

## Presentation:

**Praxohenz CR:** Available as a strip of 10 tablets.

**Praxohenz - CZ:** Available as a strip of 15 tablets.

REFERENCES : 1.CNS DRUG REV. SPRING 2001;7(1):25-47.