

La Renon



SUMASELF

Sumatriptan Injection 6 mg / 0.5 ml

SUMASELF

Sumatriptan Injection 6 mg / 0.5 ml

BACKGROUND :

- » Migraine is one of the most common neurologic disorders, with a high prevalence and morbidity, especially among young adults and females.¹
- » Migraine affects more than one billion individuals each year across the world.¹
- » According to the Global Burden of Disease (GBD) 2019 study, the estimated global prevalence of migraine increased from 721.9 million in 1990 to 1.1 billion in 2019.¹

CLINICAL EFFECTIVENESS :

JAMA. 1991 Jun 5;265(21):2831-5.

1. Treatment of Acute Migraine with Subcutaneous Sumatriptan

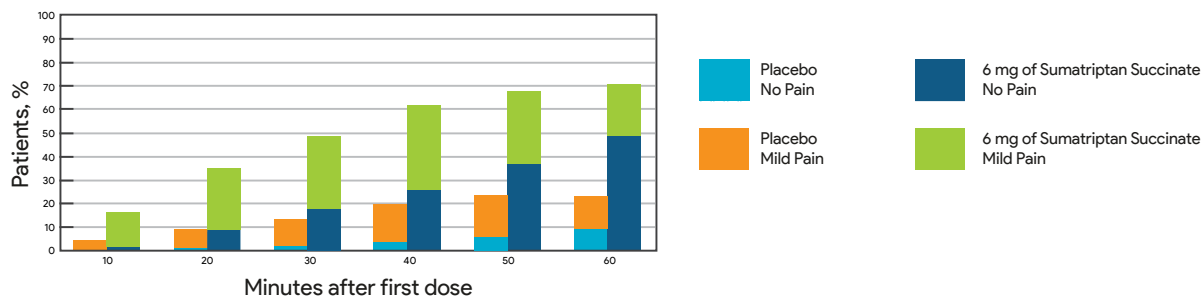
» **No. of Participants: 1,104**

» **Dose:**

N = 734 (6 mg of Sumatriptan succinate subcutaneously)

N = 370 (Placebo)

» **Results:**



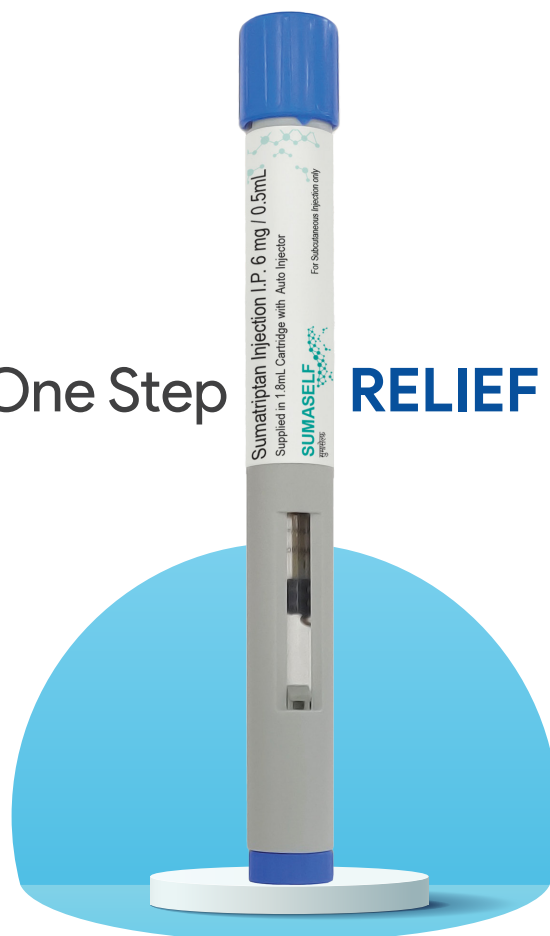
CONCLUSION :

- » Sumatriptan is an effective treatment for patients with acute migraine. A significant reduction in headaches, clinical disability, nausea, and photophobia occurs within minutes of a subcutaneous injection, with lasting effects for up to 24 hours.

References:

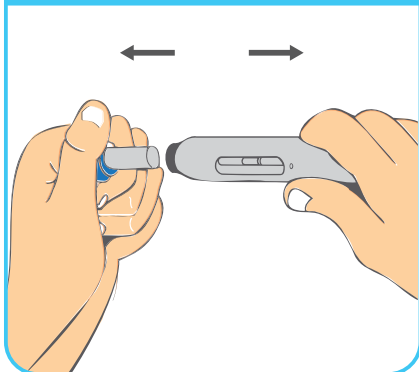
1. Front Neurol. 2022 Feb 23;12:800605.

One Step RELIEF



DIRECTION OF USE :

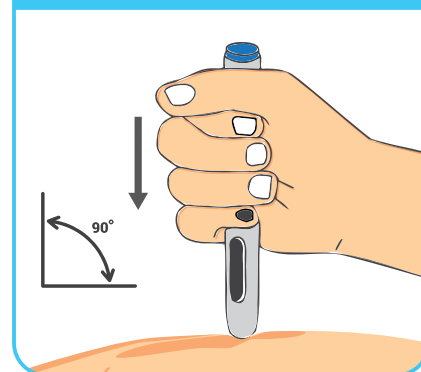
Step 1 : Rotate and Remove the Cap



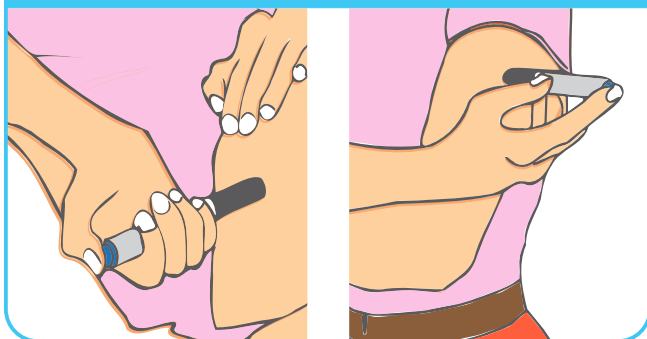
Step 2 : Rotate the button from O to I to activate the device



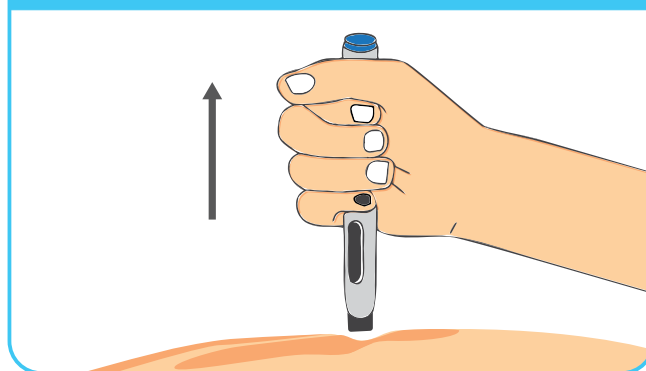
Step 3 : Hold the device at 90° to the platform firmly



Step 4 : Press the button (first click will sound), Immediately release your thumb and wait until you hear the second 'click' or 12 sec.



Step 5 : Once you hear the second click, lift and Discard the device.



SUMASELF

Sumatriptan Injection 6 mg / 0.5 ml

DESCRIPTION :

- » **SUMASELF** contains sumatriptan succinate available in 6 mg / 0.5 ml subcutaneous injection. Sumatriptan is a highly selective 5-HT_{1D} receptor agonist which relieves the migrainous headache in 70-86% of cases when injected subcutaneously. ¹

INDICATION:

- » Acute treatment of migraine with or without aura in adults.
- » Acute treatment of cluster headache in adults.

MECHANISM OF ACTION:

- » Sumatriptan is in a class of medications called selective serotonin receptor agonists. It works by narrowing blood vessels in the head, stopping pain signals from being sent to the brain, and blocking the release of certain natural substances that cause pain, nausea, and other symptoms of migraine.

DOSAGE AND ADMINISTRATION:

- » The recommended adult dose of sumatriptan is a single 6 mg / 0.5 ml subcutaneous injection. If the migraine headache returns, or if a patient has a partial response to the initial dose, the dose may be repeated after 1 hour. Not more than 12 mg (two 6 mg injections) should be taken in any 24-hour period.

KEY POINTS :

- » Subcutaneous sumatriptan auto-injection is an effective and well-tolerated acute treatment of early-morning migraine attacks allowing earlier return to normal activity. ²
- » It is an effective and well-tolerated treatment for acute attacks of cluster headache. ³
- » It is most effective dosing form, due to its efficacy and speed of action. ⁴
- » It also produced significant improvement in clinical disability scores, nausea, and photophobia. ⁵

STORAGE:

- » Store below 30°C.

References:

1. Journal of Internal Medicine 1993; 234: 211-216 | 2. Journal of Internal Medicine 1993; 234: 211-216 | 3. N Engl J Med. 1991 Aug 1; 325(5):322-6. | 4. Headache. 1998 Nov-Dec; 38(10):756-63. | 5. JAMA. 1991; 265:2831-2835

La Renon Healthcare Private Limited

207-208 Iscon Elegance, Circle P, Prahlad Nagar Cross Roads,
S.G. Highway, Ahmedabad-380015, Gujarat, India.
Phone: + 91-79-6616-8998, 2693-6656 | Fax: +91-79-6616-8998
E-mail: info@larenon.com | Web: www.larenon.com

I am: _____
Call me on: _____
Mail me at: _____

©2023 All rights reserved, La Renon Healthcare Private Limited